



CATALOGUE
2022

ERGONOMIC AND EFFICIENT
SOLUTIONS FOR YOUR EVERYDAY LIFE



ABOUT US

For almost 25 years, we have provided guidance and internal transport equipment to the industry, and, thus, helped companies like yours handling materials more effectively.

Basically, we offer high quality at a reasonable price. Without compromising on efficiency, safety and quality.

Our guidance and wide product range ensure the best and most affordable solution.



TABLE OF CONTENTS

PALLET TRUCKS	4
ELECTRICAL PALLET TRUCKS	6
HIGH LIFT PALLET TRUCKS	8
STACKERS	10
ELECTRICAL STACKERS	12
THREE-WHEELED FORKLIFT	14
FOUR-WHEELED FORKLIFT	16
MINI-LIFTERS.....	18
ELECTRICAL LIFTING TABLES	20
WAGONS / TROLLEYS.....	22
STORE TROLLEY / DISPLAY PALLET TRUCK.	24
LIFTING TROLLEYS	26
DRUM GRIPPERS	28
HANDLING OF DRUMS	30
JACKS AND LEVERS.....	32
MACHINE SKATES.....	34
SACK TRUCKS.....	36
FURNITURE TRANSPORT	38
DRUM TIPPER.....	38



Standard pallet truck

- Capacity 2500 kg
- Single or bogey wheel
- Wheel made from nylon or polyurethane



Quick-lift pallet truck

- Capacity 2500 kg
- Quick lift pedal
- Single or bogey wheel
- Wheel made from nylon or polyurethane



Noiseless pallet truck

- Capacity 2500 kg
- Rubber or antistatic wheel



Short pallet truck

- Capacity 2500 kg
- Fork length of 800 mm
- Single or bogey wheel
- Wheel made from nylon or polyurethane



Long pallet truck

- Capacity 2500 kg
- Fork length from 1500 to 2000 mm
- Single or bogey wheel
- Wheel made from nylon or polyurethane



Galvanised pallet truck

- Capacity 2500 kg
- For extremely wet environments
- Closed maintenance-free bearings
- Wheels made from nylon



Semi-stainless pallet truck

- Capacity 2500 kg
- For extremely wet environments
- Closed maintenance-free bearings
- Galvanised pump
- Wheels made from nylon



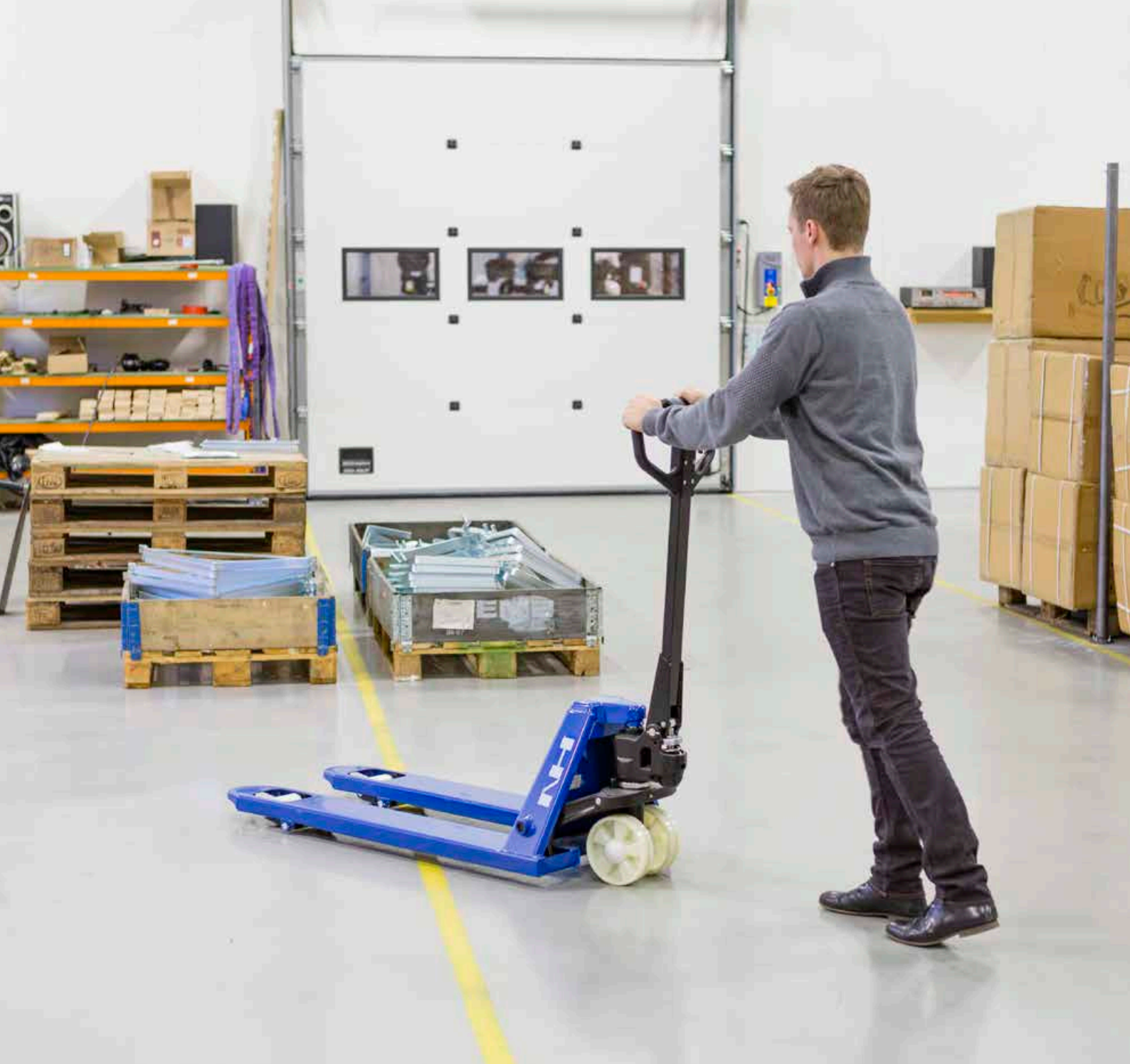
Stainless pallet truck

- Capacity 2500 kg
- For extremely wet environments
- Closed maintenance-free bearings
- 100% stainless steel
- Wheels made from nylon



Pallet loaders with integrated weighing

- Capacity 2000 kg
- Integrated weighing
- Tolerance: +/- 2 kg
- Possibility of correction of tare
- Option printer



PALLET TRUCKS FOR ALL NEEDS

As for manual pallet trucks, we offer both standard pallet trucks as well as variants with short or long fork, quick-lift function, noiseless wheels and integrated weighing, allowing you to quickly and easily see the weight of the goods to be transported.

For the slightly more specific needs, we offer stainless and galvanised pallet trucks that are easy to clean. These are optimal for use in clean and wet environments requiring a high standard of hygiene.



Electrical pallet truck

- **Capacity 1200 kg**
- Equipped with Curtis control
- Strong DC motor
- Lithium battery



Electrical pallet truck

- **Capacity 1500 kg**
- Equipped with Curtis control
- Strong DC motor
- Support wheel
- Lithium battery



Electrical pallet truck

- **Capacity 2000 kg**
- Equipped with Curtis control
- Strong DC motor
- Support wheel
- Lithium battery



Electrical pallet truck

- **Capacity 2000 kg**
- Electrical lifting function
- Schaubmüller driving engine
- Powerful battery
- External charger



Electrical pallet truck with stand-on platform

- **Capacity 2000 kg**
- Electrical lifting function
- Schaubmüller driving engine
- With stand-on platform
- Integrated charger
- Power control
- PIN code locked



Electric powered trolley

- **Capacity 1000 kg**
- Stepless speed control
- Highly useful on uneven surfaces
- For towing heavy loads on wheels
- Equipped with a 24V/50AH battery



ELECTRICAL PALLET LOADERS FOR SMOOTH HANDLING

Reduce the many manual lifts that often characterise pallet handling effectively with a self-propelled pallet truck. Self-propelled pallet trucks are light, agile and manoeuvrable, even when space is tight.

Do you need a pallet truck that can handle really intensive use, or are you looking for an affordable truck for moving goods a few times a week? We have compact and ergonomic models that accommodate all needs.

HIGH LIFT PALLET TRUCKS

Scan and find more
information on our website



Compact high lift pallet trucks

- Capacity 1000 kg
- Quick-lift
- Ergonomically correct work height



Solid high lift pallet trucks

- Capacity 1000 kg
- Quick-lift
- Ergonomically correct work height
- Possibility of long forks



Electrical-hydraulic high lift pallet truck

- Capacity 1000 / 1500 kg
- Electrical lifting function
- Ergonomically correct work height
- Possibility of long forks
- Integrated charger



Electrical-hydraulic high lift pallet truck

- Capacity 1000 kg
- Electrical lifting function
- Automatic height adjustment
- Ergonomically correct work height
- Integrated charger



High lift pallet truck

- Capacity 1000 kg
- Semi-stainless or stainless
- For extremely wet environments
- Approved for use in the food industry



Electrical-hydraulic high lift pallet truck

- Capacity 1000 kg
- Electrical lifting function
- Semi-stainless or stainless
- For extremely wet environments
- Approved for use in the food industry



HIGH LIFT PALLET TRUCKS FOR OPTIMAL ERGONOMICS

Avoid overloading yourself and your equipment with our pallet trucks, designed to take optimal ergonomics into account.

The pallet trucks are suitable for virtually all industries, where there is a need for picking up and transporting goods and articles to a desired height.

Our product range includes both compact and electric-hydraulic pallet trucks with the possibility of long forks, high capacity and integrated charger.



Manual half pallet stacker

- Capacity 400 kg
- Lifting height 1200 / 1500 mm
- Comes with removable worktop



Electric-hydraulic half pallet stacker

- Capacity 400 kg
- Lifting height 1200 / 1500 mm
- Comes with removable worktop
- Integrated charger



Manual mini stacker for half pallets

- Capacity 180 kg
- Lifting height 2500 mm
- Manual hoist
- Collapsible
- Aluminium frame - light
- Adjustable forks
- Especially suitable where space is tight



Manual pushable stacker

- Capacity 1000 kg
- Lifting height 1000 / 1600 / 2500 / 3000 mm
- Equipped with parking brake
- Simple and solid
- Does not require truck certificate



Electric-hydraulic pushable stacker

- Capacity 1000 kg
- Lifting height 1600 / 2500 / 3000 / 3300 mm
- Equipped with parking brake
- For frequent lifting
- Does not require truck certificate



EFFICIENT AND SIMPLE STACKERS

The requirements to stackers varies a lot. In general, a stacker is suitable for stacking and handling one or more pallets at different heights as well as transport. However, a stacker can also be used as a mobile workbench and for a wide range of other handling tasks.

Our selection of efficient, simple and solid stackers offers solutions with a lifting capacity of between 1000 and 3300 mm. The products come with features such as removable worktop, integrated charger and parking brake.



Electrical self-propelled stacker

- Capacity 1200 kg
- Lifting height 1600 / 2000 mm
- Mono mast
- Integrated charger



Electrical self-propelled stacker

- Capacity 1200 kg
- Lifting height 2900 / 3200 / 3600 mm
- Duplex mast
- Integrated charger



Electrical self-propelled stacker with free lift

- Capacity 1600 kg
- Lifting height 3600 / 4300 / 5300 mm
- External charger
- Large battery



Electrical self-propelled stacker with free lift

- Capacity 1200 kg
- Lifting height 2900 / 3200 / 4000 / 4600 mm
- Integrated charger
- Impulse control



Electrical self-propelled stacker with free lift

- Capacity 1600 kg
- Lifting height 3400 / 4300 / 5300 mm
- Integrated charger
- Large battery



Electrical self-propelled stacker with initial lift

- Capacity 1200 kg
- Lifting height 1600 mm
- Mono mast
- Integrated charger
- Initial lift



Electrical self-propelled stacker with initial lift

- Capacity 1200 kg
- Lifting height 3200 mm
- Duplex mast
- Integrated charger
- Initial lift



Electrical self-propelled stacker with initial lift

- Capacity 2000 kg
- Lifting height 1600 mm
- External charger
- Initial lift



SOLID AND SAFE SELF-PROPELLED STACKERS

An electrical stacker makes work easier, more comfortable and ergonomic.

Whether the task requires very high lifting with a heavy load, lifting where space is tight or simply ergonomic relief of the body, we can offer an electrical that gets the job done.

When choosing a stacker, it is important to note that an electrical stacker requires a truck certificate. If the stacker is equipped with 1 meter stop, it can be operated by persons not having a truck certificate.

The stackers come with lifting heights from 1600-5300 mm



Compact and efficient
three-wheeled forklift

- **Capacity 1200 kg**
- Side shift
- Fork positioner
- Central water filling
- Comfort package
- Comes with several different lifting heights



Compact and efficient
three-wheeled forklift

- **Capacity 1600 kg**
- Side shift
- Fork positioner
- Central water filling
- Comfort package
- CURTIS control
- Comes with several different lifting heights



Compact and efficient
three-wheeled forklift

- **Capacity 1800 kg**
- Side shift
- Fork positioner
- Central water filling
- Comfort package
- CURTIS control
- Comes with several different lifting heights



Compact and efficient
three-wheeled forklift

- **Capacity 2000 kg**
- Side shift
- Fork positioner
- Central water filling
- Comfort package
- CURTIS control
- Comes with several different lifting heights



COMPACT AND EFFICIENT FORK LIFTS

With its lifting capacity of up to 2000 kg, this three-wheeled electrical forklift can help you lift even the most challenging articles. It is easy to operate, compact and efficient.

A three-wheeled forklift is especially suitable for indoor use, as it can turn on its own axis and is more manoeuvrable.

All models comes with side shift, fork positioner and central water filling

We provide guidance in choosing a forklift that suits your particular needs and make sure that you're fully familiar with operating the equipment.

FOUR-WHEELED FORKLIFT

Scan and find more
information on our website



Solid and reliable four-wheeled forklift

- **Capacity 1600 kg**
- Cabin is an option
- Side shift
- Fork positioner
- Central water filling
- Comfort package
- CURTIS control
- Comes with several different lifting heights



Solid and reliable four-wheeled forklift

- **Capacity 1800 kg**
- Cabin is an option
- Side shift
- Fork positioner
- Central water filling
- Comfort package
- CURTIS control
- Comes with several different lifting heights



Solid and reliable four-wheeled forklift

- **Capacity 2000 kg**
- Cabin is an option
- Side shift
- Fork positioner
- Central water filling
- Comfort package
- CURTIS control
- Comes with several different lifting heights



Strong and solid four-wheeled forklift

- **Capacity 2500 kg**
- Cabin is an option
- Side shift
- Fork positioner
- Central water filling
- Comfort package
- CURTIS control
- Comes with several different lifting heights



Strong and solid four-wheeled forklift

- **Capacity 3000 kg**
- Cabin is an option
- Side shift
- Fork positioner
- Central water filling
- Comfort package
- CURTIS control
- Comes with several different lifting heights



Strong and solid four-wheeled forklift

- **Capacity 5000 kg**
- Cabin is an option
- Side shift
- Fork positioner
- Central water filling
- Comfort package
- CURTIS control
- Comes with several different lifting heights



STRONG AND SOLID FORK LIFTS

Good ergonomics, flexible settings and meet expectations for an improved indoor climate are just some of the characteristics of the four-wheeled electrical forklift from NH Handling.

The truck is noiseless and suitable for a number of different tasks, both indoors and outdoors.

The seat suspension fork spread are some of the most important parameters for a comfortable and easy workday, during which many hours are spent in the seat.

All models comes with side shift, fork positioner and central water filling

Comes with many different lifting heights.



Manual mini-lifter

- Capacity 200 kg
- Lifting height 1500 mm
- Gentle on legs and back



Electric mini-lifter - 1500 mm

- Capacity 150 kg
- Lifting height 1500 mm
- Lifts and lowers electronically
- Low total height
- Gentle on legs and back



Electric mini-lifter - 1800 mm

- Capacity 150 kg
- Lifting height 1800 mm
- Lifts and lowers electronically
- Gentle on legs and back



Electric mini-lifter - 2000 mm

- Capacity 150 kg
- Lifting height 2000 mm
- Lifts and lowers electronically
- Gentle on legs and back



LIGHT, EFFICIENT AND ERGONOMIC MINI-LIFTERS

A mini-lifter is especially good at stacking lighter articles. The mini-lifter is easy and efficient to use in situations where space is limited, and it can be used as a and can also be used as a mobile lifting table.

By using a mini-lifter, you reduce the strain on your legs and back during heavy lifting, and with the electronic solution the task of lifting and lowering is very easy.



Standard - Electrical hydraulic lifting table

- Capacity 500 / 1000 / 2000 / 3000 kg
- Lifting height 1010 mm
- Tabletop 1300 x 800



Special - Electrical hydraulic lifting table

- Capacity 500-2000 kg
- Lifting height 990-1300 mm
- Tabletop width 850-1000 mm
- Tabletop length 1600-2000 mm



Trolley for standard lifting tables

- Capacity 1000 kg
- Allows the lifting table to be moved
- Suitable for 500-1000 kg



Electrical-hydraulic u-lifting table

- Capacity 1000 kg
- Lifting height 760 mm
- External dimensions 1450 x 1140 mm



Mobile u-scales for fine weighing

- Capacity 2000 kg
- 4 weighing cells for extra precision
- Stainless indicator by default
- Kg shown in whole number
- Tolerance: +/- 2 kg



OPTIMAL WORK HEIGHT WITH ELECTRICAL LIFTING TABLE

We carry a selection of electrical hydraulic stationary lifting tables. The lifting tables are available as standard lifting table or u-lifting table, depending on the lifting task.

The table is ideal as a workbench, as it is both wide and can lift high - a good investment that offers better working positions.

The lifting table is easy to operate with a push button system, and the lifting height varies between 760 and 1300 mm, thus achieving the ergonomically correct working height



Simple and solid flatbed trolleys

- Load 500 kg
- With and without sides/gables
- Available with different wheel types



Manoeuvrable pallet trolleys

- Load 800 kg
- Suitable for 1/2 pallets and EURO pallets
- Available with different wheel types
- Available in different sizes



Stable and solid store trolley

- Load 500 kg
- Equipped with laminated MDF boards
- Available with different wheel types
- Available in different sizes



Trolleys

- Capacity 120-250 kg
- Solid and handy
- For transport of light articles
- Up to 3 shelves



Table trolley

- Load 150 kg
- Equipped with 2 shelves
- Equipped with 4 swivel wheels
- Galvanized steel construction



Stainless serving trolleys

- Capacity 100 kg
- Hygienic trolleys
- 4 swivel wheels
- Comes with either 2 or 3 shelves
- Available in several dimensions



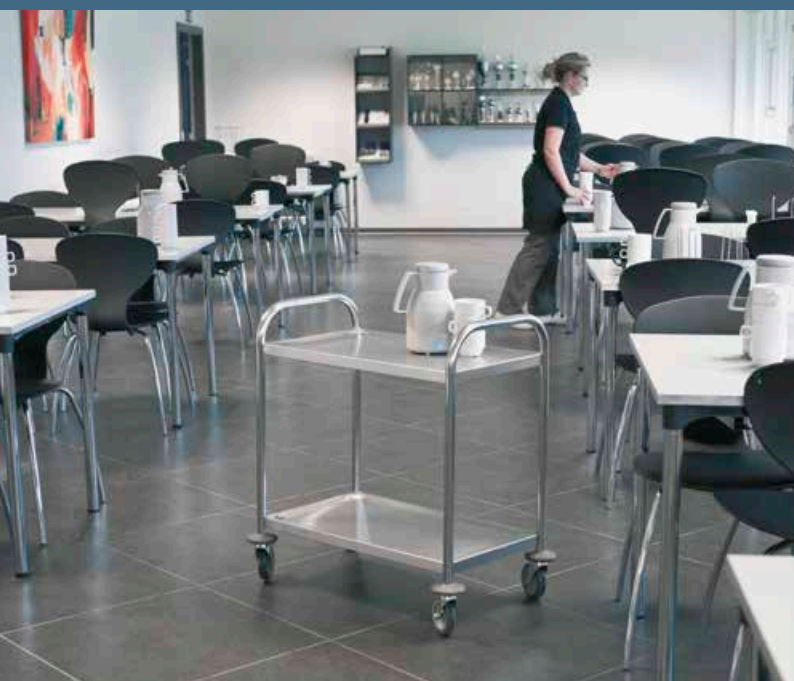
Solid wheels

- Fixed wheels
- Swivel wheels
- Swivel wheels with brake



Rubber wheels (air)

- Fixed wheels
- Swivel wheels



WIDE SELECTION OF TABLE TROLLEYS

Our table trolleys serve every purpose and all come in a powerful steel construction. Their load capacity varies from 100 to 800 kg, and, accordingly, they can be used in industries with a need for very high capacity, e.g. in warehouses and workshops. Several of our trolleys are available with different wheel sizes.



Manual display pallet truck for 1/4 pallets

- Capacity 200 kg
- For moving and transporting 1/4 pallets
- Lifting and lowering device with foot pedal



Hydraulic display pallet truck for 1/4 pallets

- Capacity 250 kg
- Hydraulic lifting of 1/4 pallets
- For loading and unloading on EURO pallets
- Ergonomic handle



Store trolley

- Capacity 300 kg
- Extra solid and compact
- Top shelf can be folded down
- Noiseless wheels



Store trolley with basket

- Capacity 300 kg
- Extra solid and compact
- Top shelf can be folded down
- Noiseless wheels



STORE TROLLEYS FOR EVERYDAY TASKS

Our display pallet trucks for moving and transporting 1/4 pallets comes in many different shapes, depending on their intended use. In the store and at the warehouse, the cart can be used as a flexible picking cart, making it easy to place or pick articles from a certain height.

In production, the trolleys can be used for transporting goods and materials. The selection of wagons ranges from 200-300 kg, and they come in both manual and hydraulic versions.



Manual lifting trolleys

- Load 150 / 300 / 500 kg
- Lifting height 720 / 880 mm
- Single scissors
- Stepless height adjustment



Manual lifting trolleys

- Load 350 / 800 kg
- Lifting height 1300 / 1800 mm
- Double scissors
- Stepless height adjustment



Electrical hydraulic lifting trolley

- Load 500 kg
- Lifting height 950 mm
- Single scissors
- Stepless height adjustment



Electrical hydraulic lifting trolleys

- Load 300 / 800 kg
- Lifting height 1460 / 1618 / 1800 mm
- Double scissors
- Stepless height adjustment



EASY-TO-USE AND SOLID LIFTING TROLLEYS

Our lifting trolleys can lift objects up to 800 kg.

The hydraulic lifting trolleys with stepless height adjustment ensure ergonomically correct working height and lifting position.

The solid lifting trolley is lowered using a foot pedal and is equipped with two fixed and two swivel wheels with brake. Comes with five different lifting capacities and four different lifting heights.



Ergonomic drum gripper

- Capacity 300 kg
- Lifting height 805 mm
- Increases flexibility and efficiency
- Wheels: Ø 125 x 32 mm
- Designed to handle 200 L steel drums and 210 L plastic drums



Ergonomic drum gripper

- Capacity 300 kg
- Lifting height 805 mm
- Increases flexibility and efficiency
- Wheels: Ø 64 x 32 mm
- Designed to handle 200 L steel drums and 210 L plastic drums



Drum stacker

- Load 450 kg
- Lifting height 1470 mm
- Lifts, tips and turns barrels professionally
- Perfect for emptying drums



Drum cart

- Capacity 350 kg
- Simple and easy-to-use solution
- Suitable for all 200 L steel drums



Drum dolly

- Capacity 450 kg
- Simple and easy-to-use solution
- Large rubber wheels
- Suitable for all 200 L steel drums



EFFICIENT AND FLEXIBLE HANDLING OF DRUMS

Our ergonomic drum solutions lift, tip and turn barrels professionally, and facilitate your handling of the more unmanageable articles.

NH Handling will help guiding you to best possible solution for the task. This means that you avoid unnecessary strain on your body when moving or emptying the drums.



Manual drum gripper

- Capacity 360 kg
- Suitable for 200 L steel drums
- Transport of 1 drum via truck



Manual drum gripper

- Capacity 360x2 kg
- Suitable for 200 L steel drums
- Transport of 2 drums via truck



Automatic drum gripper

- Capacity 500 kg
- Suitable for 200 L steel and plastic drums
- Lift and transport the drums without leaving the truck



Drum tongs

- Capacity 350 kg
- Semi-automatic locking device
- Suitable for 200 L steel drums



Drum tongs

- Capacity 500 kg
- Semi-automatic locking device
- Suitable for 200 L steel drums
- For horizontal lifting of drums



MANAGE DRUMS WITH FORKLIFT AND CRANE

Our truck solutions mean that the drum is gripped automatically and secured during transport. Lift and transport drums without leaving the truck.

A drum tong is especially suitable for placing drums on drum stands. A quick and simple solution for handling drums with forklift or crane.



Machine jack

- Capacity at top 7500 kg
- Capacity at base 6000 kg
- Precise lifting and lowering of the load



Machine jack

- Capacity at top 10000 kg
- Capacity at base 10000 kg
- Precise lifting and lowering of the load



Machine jack

- Capacity at top 25000 kg
- Capacity at base 25000 kg
- Precise lifting and lowering of the load



Machine jack

- Capacity 3000 kg
- Rotating legs



Machine jack

- Capacity 8000 kg
- Rotating legs



Powerful lever

- Capacity 1500 kg
- Length 2000 mm
- Perfect for lifting smaller machines
- Lever on steel wheels



MACHINE JACKS FOR THE HEAVIEST TASKS

Machine jacks are used for many different tasks. A machine jack is useful when lifting machines or heavy components when moving them - e.g. to the next assembly phase.

A foldable handle facilitates transport, and the welded design ensures stability for demanding tasks.



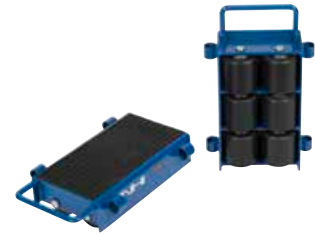
Adjustable skates

- Capacity 2500 kg
- Wheels made of polyurethane
- Sold as separate units



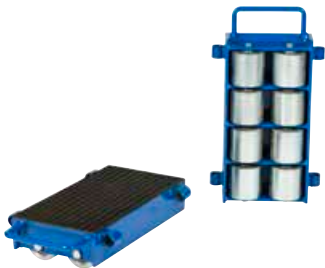
Adjustable skates

- Capacity 6000 kg
- Wheels made of polyurethane
- 2 bars included
- 2 skates connected by 2 bars



Adjustable skates

- Capacity 12000 kg
- Wheels made of polyurethane
- 2 bars included
- 2 skates connected by 2 bars



Adjustable skates

- Capacity 24000 kg
- Wheels made of steel
- 2 bars included
- 2 skates connected by 2 bars



Steerable machine skates

- Capacity 3000 kg
- Wheels made of polyurethane



Steerable machine skates

- Capacity 6000 kg
- Wheels made of polyurethane
- Drawbar is steerable



Steerable machine skates

- Capacity 12000 kg
- Wheels made of steel
- Drawbar is steerable



Machine skates

- Capacity 16000 kg
- Wheels made of polyurethane
- Complete set



MACHINE SKATES FOR MOVING ARTICLES EASILY

Our wide selection of machine skates are ideal for moving machines, furniture and other heavy articles.

You can choose between adjustable machine skates and steerable machine skates for heavy transport tasks. Depending on the model, they handle loads from 2500 to 24,000 kg



Powerful foldable sack trucks

- Capacity 60 / 125 / 200 kg
- Comes in 3 sizes: S / M / L
- Powerful and foldable
- Easy transport and storage



Professional sack trucks for goods

- Capacity 150 kg
- Wheel type: Air / solid
- Foldable foot plate
- Powder coated



Professional sack truck

- Capacity 250 kg
- Wheel type: Air / solid
- Powder coated
- Foldable foot plate



Professional sack truck made of aluminium

- Capacity 100 kg
- Wheel type: Air
- Foldable foot plate



Sack truck with hoist

- Capacity 120 kg
- Lifting height: 1000 mm
- Powder coated
- Adjustable fork width



Stair sack truck

- Capacity 120 kg
- Powder coated
- Foldable foot plate
- Suitable for all types of stairs



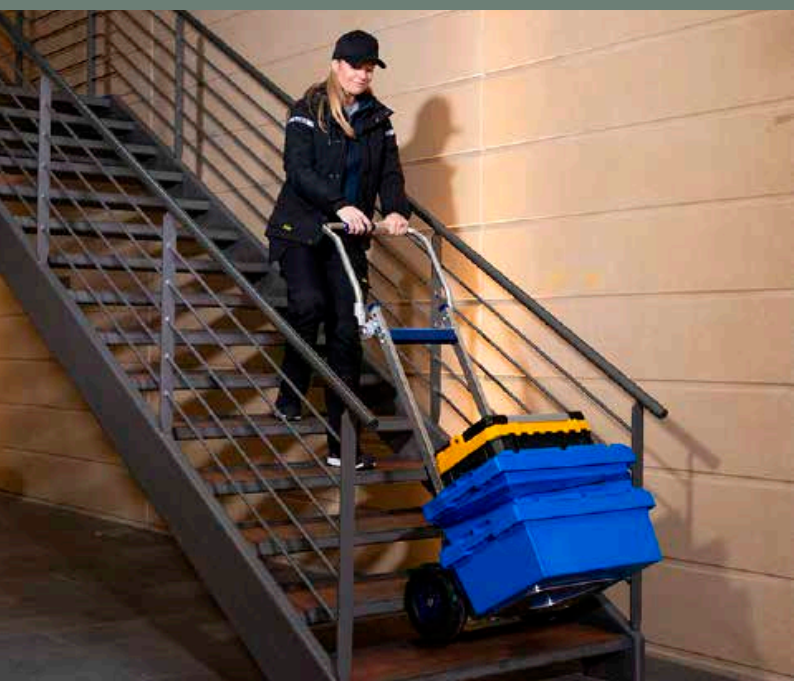
Electrical stair sack truck

- Capacity 170 kg
- Steps per charge: 900-1800 steps
- Max step height 21cm
- Equipped with rubber wheels (air)



Electrical stair sack truck with hoist

- Capacity 170 kg
- Steps per charge: 700-1500 steps
- Max step height 21cm
- Equipped with rubber wheels (air)



SACK TRUCKS WITH MANY FEATURES

Using a sack truck will reduce the strain on the body and damage to the goods. The selection covers many different working situations, e.g. transport of boxes and other articles that are not easy to handle.

When choosing a sack truck it should be taken into consideration which load handling device is optimal for the task. A stair sack truck moves goods and articles safely up and down stairs. A sack truck with hoist reduces the strain on the body when moving goods from the sack truck to a rack or van. The goods are easily hoisted to the desired height with a smart crank.

Our professional sack trucks are available in powder coated steel or aluminium, and they have a loading capacity of 60 to 250 kg.

FURNITURE TRANSPORT

Scan and find more
information on our website



Manual furniture transporter

- Capacity 600 kg
- Lifting height: 300 mm
- Rubber-coated lifting plates
- Double frame made of steel



Hydraulic furniture transporter

- Capacity 1800 kg
- Lifting height: 250 mm
- Rubber-coated lifting plates
- Double frame made of steel



Transport corners

- Load per corner: 150 kg
- Includes 4 units per set.
- Makes moving of furniture and machines easy

DRUM TIPPER

Scan and find more information
on our website



Drum tipper

- Suitable for 25 l drums
- Ergonomic design to prevent injury on the back
- Easy handling and emptying of drums
- Can be used standing on the floor and hanging on the wall



Drum tipper

- Suitable for 60 l drums
- Ergonomic design to prevent injury on the back
- Easy handling and emptying of drums
- Swivel wheels can be purchased separately



FURNITURE TRANSPORT FOR DEMANDING TASKS

At NH Handling we offer both manual and hydraulic furniture transporters with rubber-coated lifting plates and double frames made of steel.

The furniture transporter is controlled by means of steering handles.



EASY HANDLING OF DRUMS

Smart drum tippers for handling 25 and 60 litre drums. Avoids strain on the back during heavy lifting and ergonomically incorrect working postures.

Can be mounted on both floor and wall for easy handling and emptying of drums.



WANT TO LEARN MORE?

Whether you handle material within the industry sector, the agricultural sector, at traditional warehouses or highly efficient logistics and distribution centres, we offer an high-quality ergonomic solution to help you increase efficiency.

Contact us for professional counselling or a non-binding talk about quality products at a reasonable price and efficiency improvements in your company.



SØREN CHRISTENSEN
MANAGING DIRECTOR

E-mail: sc@nh.dk
Mobile phone: 4045 2063



JOHN RAHBK
SALES MANAGER

E-mail: jr@nh.dk
Mobile phone: 2333 3184



HEINRICH CHRISTENSEN
DISTRICT MANAGER

E-mail: hc@nh.dk
Direct number: 2020 7083



KURT LARSEN
DISTRICT MANAGER

E-mail: kl@nh.dk
Direct number: 4314 1444



JØPPE BIRKEDAL
PRODUCT MANAGER

E-mail: jb@nh.dk
Direct number: 8727 6412



NICLAS KÆRTOFT ASTRUP
SALES TRAINEE

E-mail: na@nh.dk
Direct number: 87 27 64 15



MORTEN FRIIS
MARKETING BUSINESS MANAGER

E-mail: mf@nh.dk
Direct number: 87 27 64 07



WERNER BERG HANDEL
LOGISTICS, WAREHOUSE AND SERVICE

NH Handling A/S offers solutions for a wide range of professional and price-conscious suppliers in various industries, including iron and metals, agriculture, transport, warehousing, food and pharmaceuticals.

Feel free to contact us for counselling and information about your nearest dealer.

NH Handling A/S

Lundvej 48 • DK-8800 Viborg • Tel. 70 27 01 60
E-mail: nh@nh.dk • www.nh.dk

SEE MORE AT:
WWW.NH.DK

